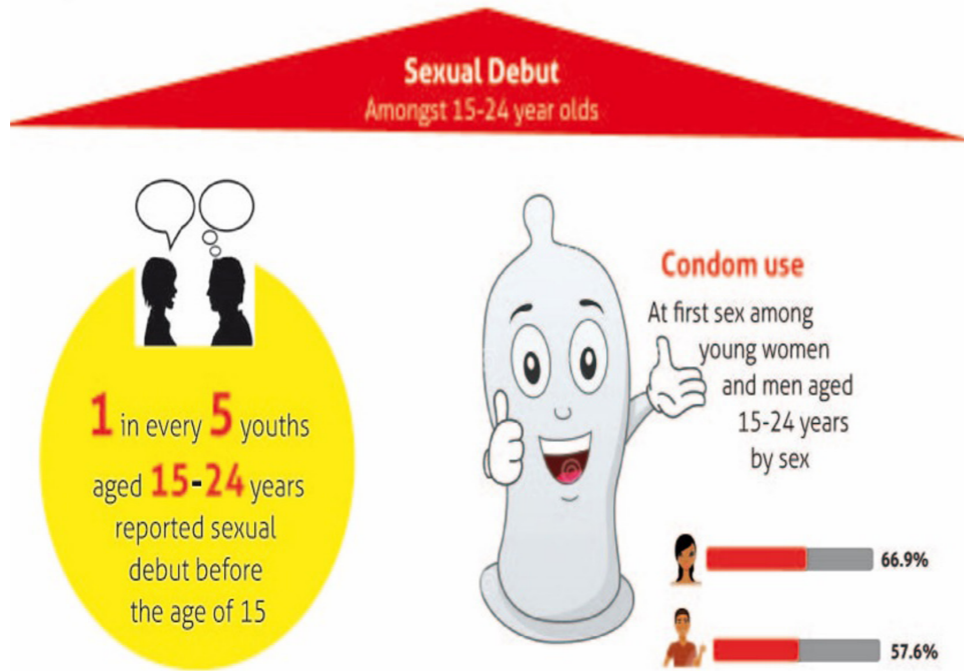
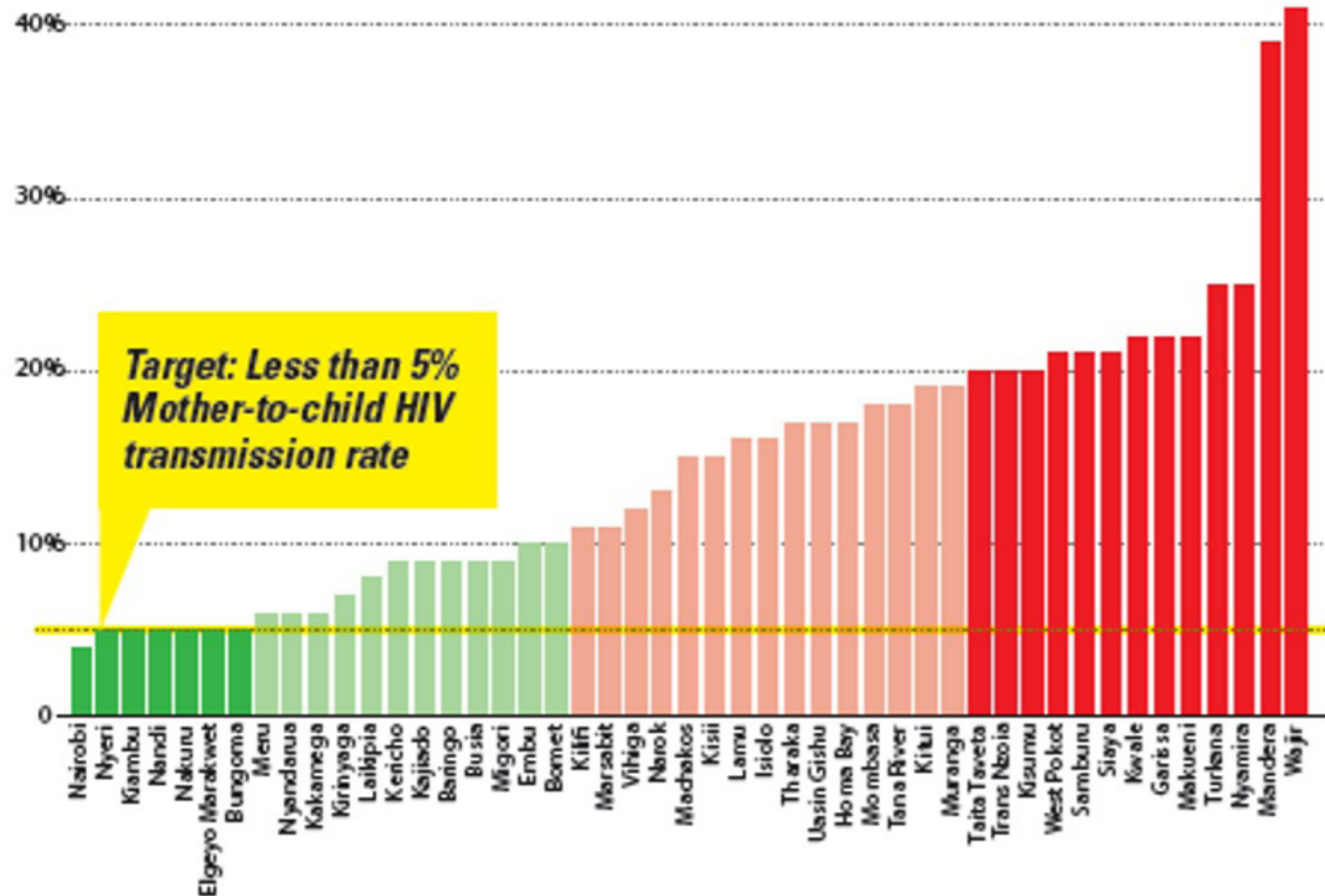


Condom use among young people
Adolescents, Youth and HIV in Kenya
2014 Fact Sheet

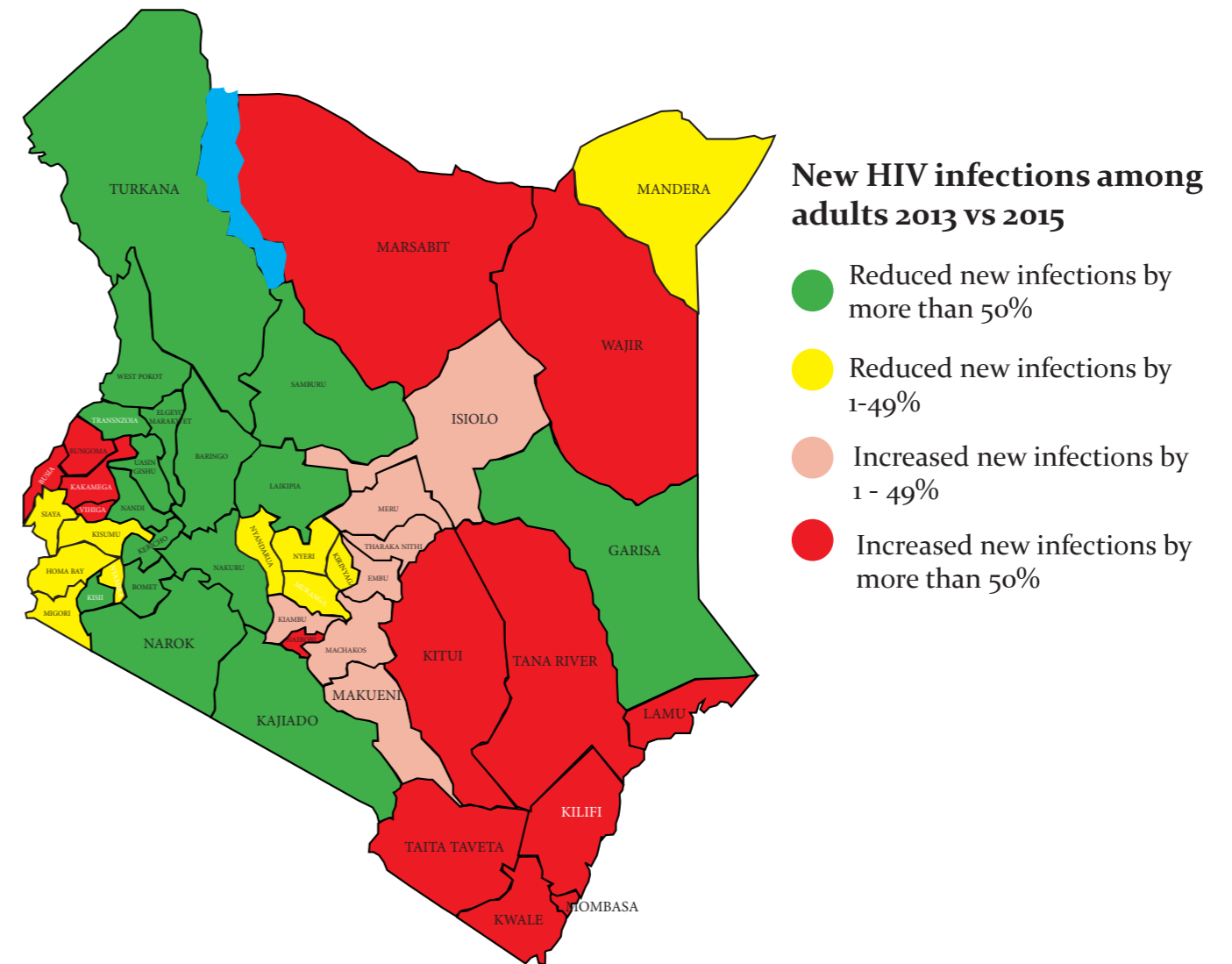


Age and sex disaggregated data is critical to inform HIV prevention, treatment and care interventions with adolescents and youth. This fact sheet was compiled to provide key data at a glance to inform decision making and is based on latest available national data.

Progress in elimination of mother to child transmission across counties between 2013

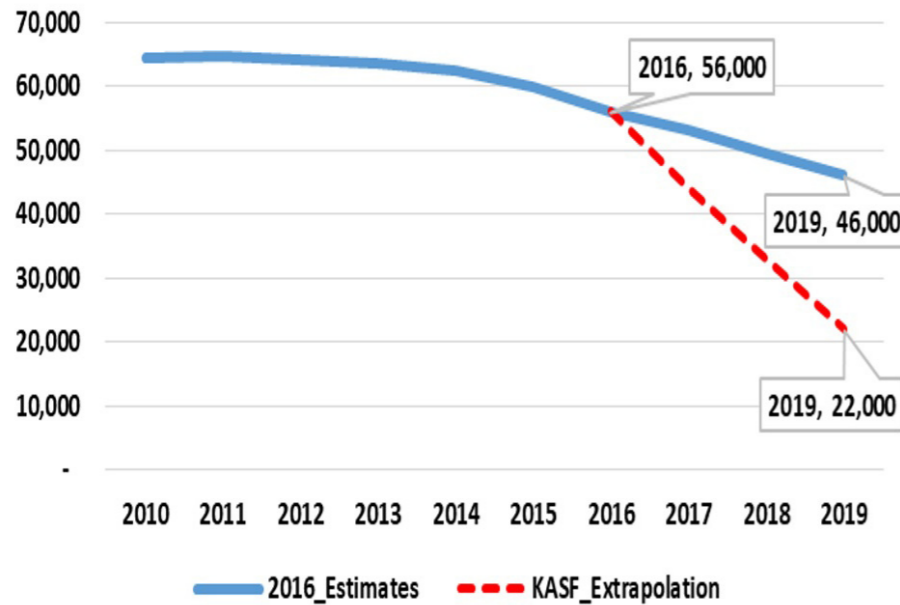


New HIV infections among adults 2013 vs 2015

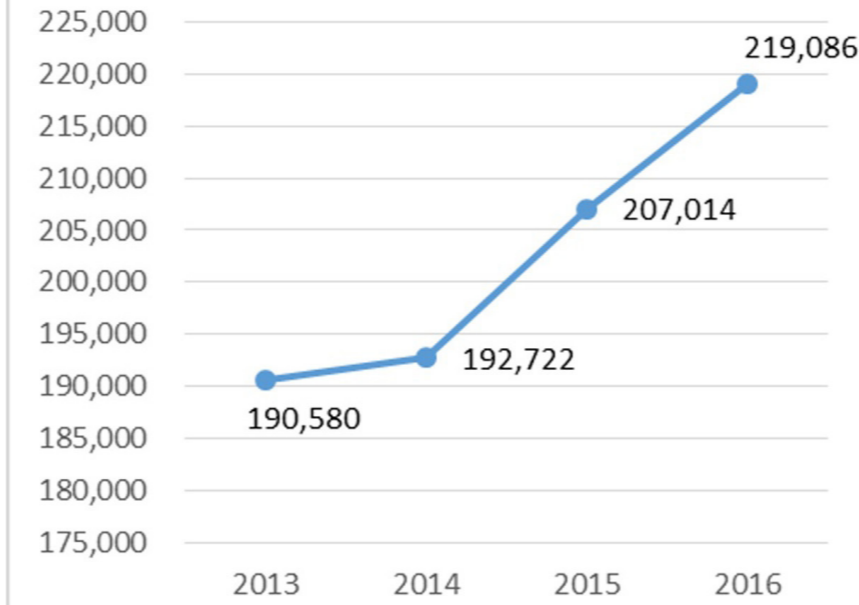


County Clusters based on baseline data in 2013	Reverse gear; Increase in HIV incidence (of any proportion)	Parking; Minor decrease in HIV incidence (<50% reduction)	Forward gear; Major decrease in HIV incidence (≥50% reduction)
High Incidence counties (9)	None	5 Counties i.e Homa Bay, Siaya, Kisumu, Migori, Nyamira,	4 counties i.e Turkana, Kisii, Bomet, Nakuru
Medium incidence counties (28)	13 Counties i.e Kiambu, Mombasa, Makueni, Machakos, Isiolo, Tharaka Nithi, Kitui, Taita Taveta, Kwale, Embu, Meru, Nairobi, Kilifi	4 Counties i.e Muranga, Nyeri, Nyandarua, Kirinyaga	11 Counties i.e Trans Nzoia, Narok, Samburu, Kajiado, Uasin Gishu, Nandi, Laikipia, Kericho, Baringo, West Pokot, Elgeyo Marakwet
Low incidence counties (10)	8 Counties i.e Lamu, Marsabit, Tana River, Busia, Kakamega, Vihiga, Bungoma, Wajir	None	2 Counties i.e. Garissa, Mandera

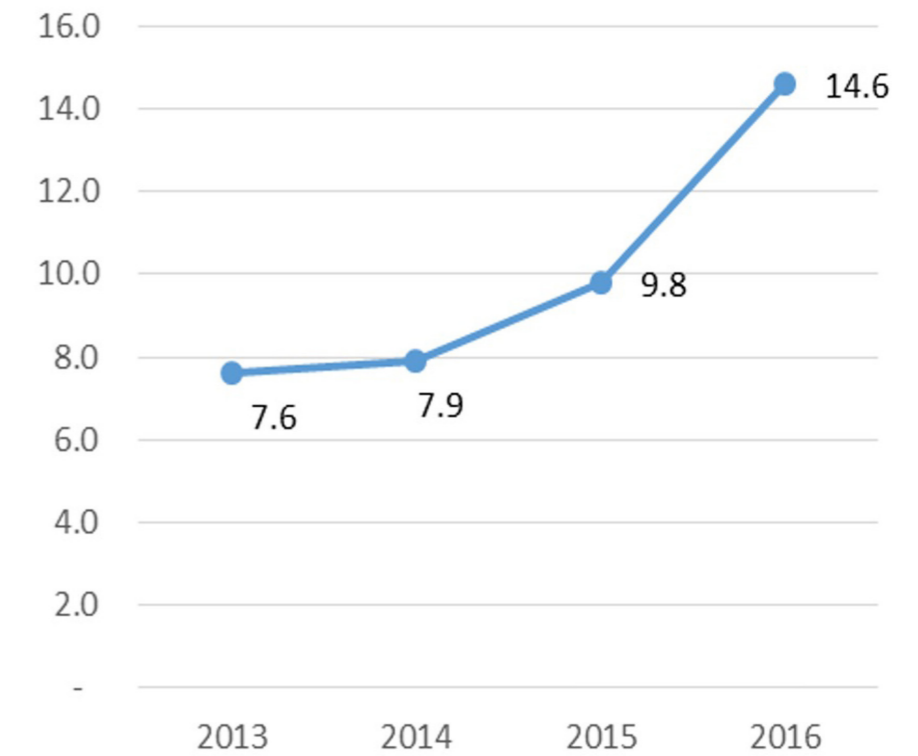
Trend of annual new HIV infections
(Estimates Vs KASF projections)



Voluntary Medical Male Circumcision (VMMC)



HIV Testing Services HTS)

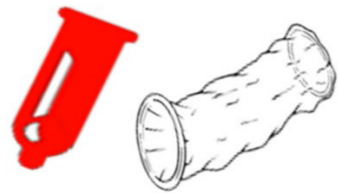


93% of men 15-49 years are circumcised
(KDHS 2014)

Condom usage at last high-risk sex*



44% males reported using condom at last high-risk sex



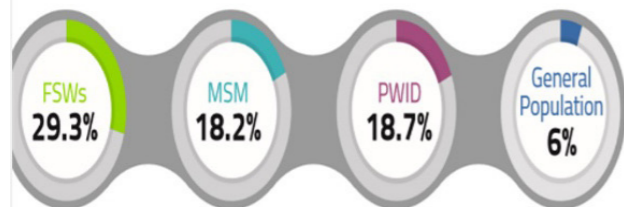
40% females reported using condom at last high-risk sex



* KDHS Report 2014

Combination prevention options among key populations

High HIV prevalence and new infections occur among key populations^{3,4,5}

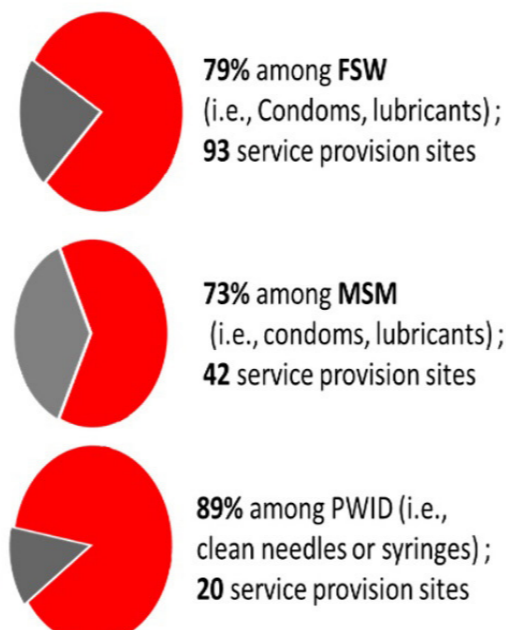


New HIV Infections by Population

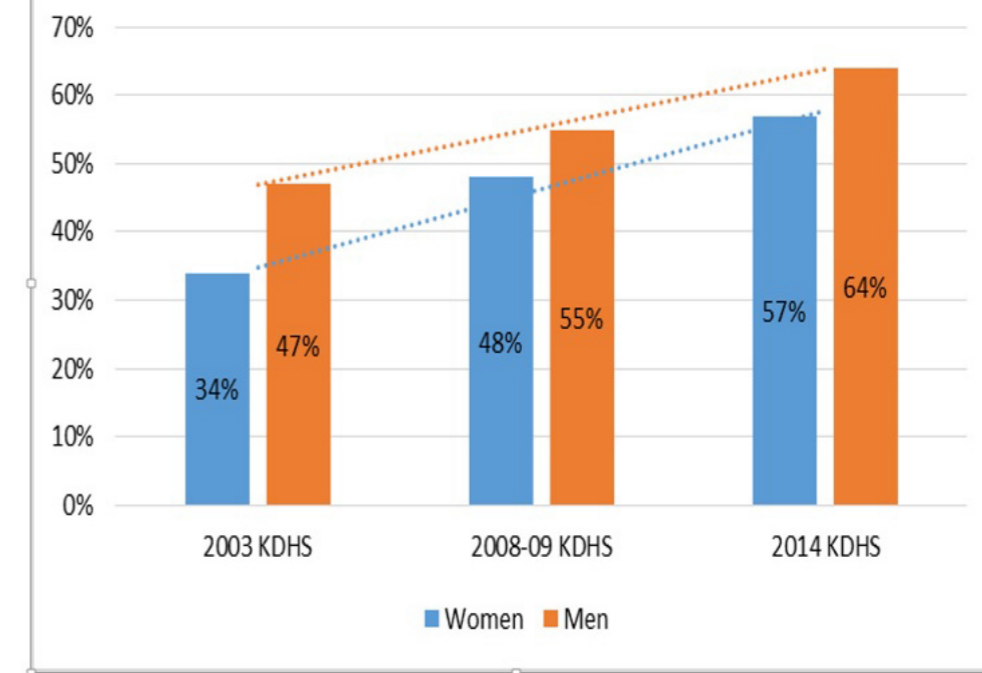
20.3% Casual heterosexual sex
2.5% Health Facility Related
44.1% Heterosexual sex within union
14.1% Sex workers and Clients
3.8% People Who Inject Drugs
15.2% MSM and Prison

33% of the new HIV infections occur in key populations

Percentage of Key Population Reporting having received a combined set of HIV Prevention Interventions (Polling Booth Survey, 2015)



Comprehensive knowledge about AIDS



Sexual Debut (KDHS 2014) Among 15-24 year old

1 in every 8 women aged 15-24 years old reported sexual debut before age of 15

1 in every 5 men aged 15-24 years old reported sexual debut before age of 15